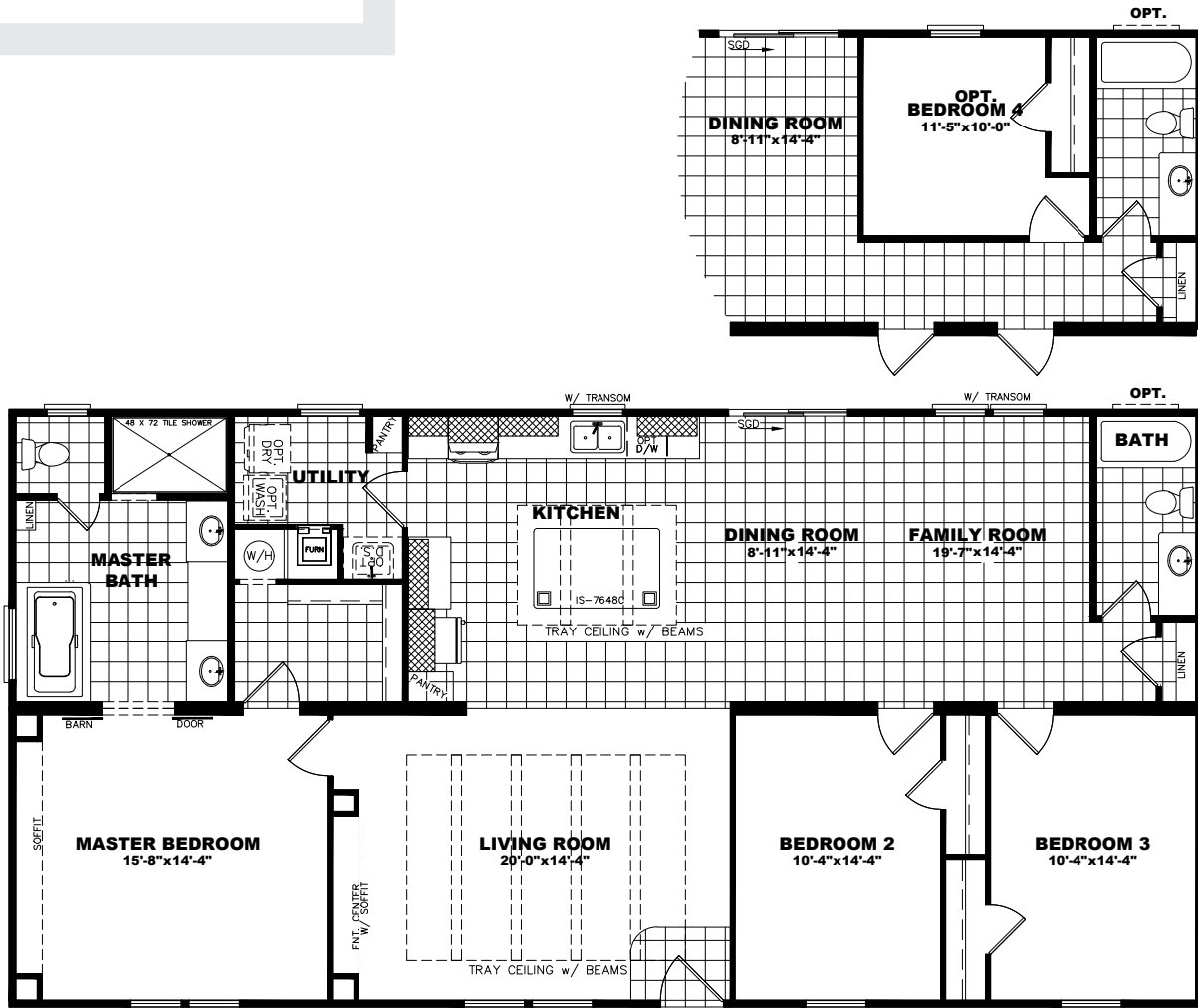


THE Anniversary SERIES

ANNIVERSARY 3.0 32

ANN32603AH

32 x 60 | 1800 sq. ft. | 3 Bedroom 2 Bathroom



THE Anniversary SERIES

Standard Features

ENERGY

- Lux Low E Vinyl Thermopane Windows
- R 22-13-33
- Solarbord Radiant Barrier Roof Decking
- Ecobee Smart Thermostat
- Carrier Furnace
- 40 Gallon Water Heater
- LED Light Bulbs
- Recessed Can Lighting in Kitchen, Dining and Hallways

STRUCTURAL

- 8 1/2' Sidewall Height - Flat Ceilings
- Double 2x4 Marriage Walls
- Unitized Construction
- Water Shut-Offs Throughout
- Exterior GFI Receptacle (1)
- 19/32" OSB Floor Decking
- 2x4 Exterior Walls - 16" O.C.
- 2x6 Floor Joists - 16" O.C.

BATHROOMS

- 4872 Tile Shower in Master Bath
- Bathroom Towel and Tissue Holders
- Square China Bath Sinks with Overflow
- Elongated Toilets
- Recessed Can Lights Over Vanity
- Arched Shower Rod With Curtain

EXTERIOR

- LP Smart Side Siding w. Vapor Barrier
- Cement Fiber Fascia & Soffit
- 12" Eaves - Vented on Sidewalls
- Steel 36x80 Front Door with Storm Door
- 34x80 Steel Rear 9-Lite Outswing Door
- Coach Lights At Exterior Doors
- Quick-Set Exterior Locks and Deadbolts
- Metal Awning At Living Room
- Double Dormer With 3 Columns
- 3 Pair Colonial Shutters
- Transom Windows in Kitchen and Dining Room

INTERIOR

- 1/2" Painted Tape & Texture Walls Throughout (except off bedroom, linen and pantry closets)
- Wood Closet Shelving and Dow Rods
- 3" x 1/2" Molding Throughout
- Textured Ceilings
- 2" Plantation Blinds Throughout
- Wire & Brace For Ceiling Fan With Double Switches in MBR and LVR
- Vinyl Foyer Entry
- 7/16" 5.5# Rebond Carpet Pad
- Shaw Delight Nylon Carpet with R2X Soil and Stain Resistance
- 32" Interior Passage Doors
- Residential Door Stops
- Entertainment Ctr with Wood Slats in LVR
- Soffit With Can Lights In Master Bedroom
- Trey Ceiling With Beams In Living Room

KITCHEN

- Metal Kitchen and Bath Faucets
- Duracraft Cabinets with 42" Overhead Cabinets
- Drawer Over Door Construction In Kitchen
- Designer Cabinet Hardware
- Heavy Duty Hidden Cabinet Hinges
- Tumbled Stone Backslash to Cabinet
- Lined Overhead and Base Cabinets
- Stainless Steel Sink With Sprayer
- Plumb For Icemaker
- Frigidaire Electric Coil Range
- Trey Ceiling With Beams Over Island
- Wood Slat on Island
- Cabinet Cove Molding
- Rounded Countertop Edge

Due to our continuous improvement efforts, specifications are subject to change without notice.

Revised 4/16/20

