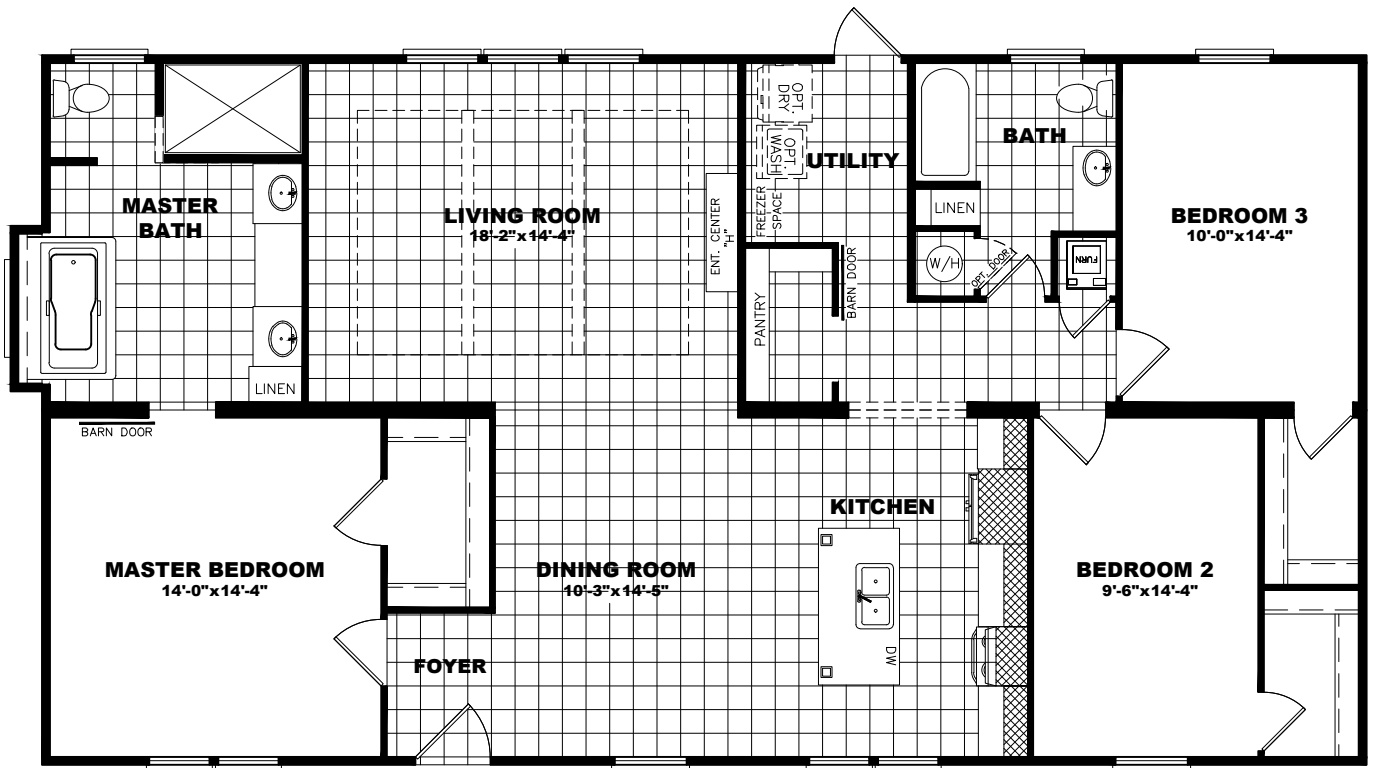


EZ | LIVING SERIES



32 X 56 | 1680 SQ. FT. | 3 BEDROOM 2 BATHROOM

EZL32563AH



EZ | LIVING SERIES

STANDARD FEATURES

ENERGY

- Lux Low E Vinyl Thermopane Windows
- R 22-13-33 Insulation
- Solarbord Radiant Barrier Roof Decking
- Ecobee Smart Thermostat
- Carrier Smart Comfort Furnace
- 40 Gallon Water Heater
- LED Light Bulbs
- Pendant Lights over Island

STRUCTURAL

- 8 1/2' Sidewall Height - Flat Ceilings
- Double 2x4 Marriage Walls
- Unitized Construction
- Water Shut-Offs Throughout
- Exterior GFI Receptacle (2)
- 19/32" OSB Floor Decking
- 2x4 Exterior Walls - 16" O.C.
- 2x6 Floor Joists - 16" O.C.
- Exterior Water Spigot - Rear

BATHROOMS

- 4872 Tile Shower in Master Bath
- Square China Bath Sinks with Overflow
- Elongated Toilets
- Recessed Can Lights Over Vanity
- Tumbled Stone Backsplash - 1 Row

EXTERIOR

- LP Smart Side Siding w. Vapor Barrier
- Cement Fiber Fascia & Soffit
- 12" Eaves - Vented on Sidewalls
- Steel 36x80 Front Door with Storm Door
- 34x80 Steel Rear 9-Lite Outswing Door
- Coach Lights At Exterior Doors
- Kwikset Exterior Locks and Deadbolts
- Single and Mini Dormer With 4 Columns
- Cement Lap - Front
- Board & Batt Accents At Dormers
- 4614 Transom Over Master Tub

INTERIOR

- 1/2" Painted Tape & Texture Walls Throughout (except off bedroom, linen and pantry closets)
- Wood Closet Shelving and Dow Rods
- 5" Base & Cove In Living Areas
- Textured Ceilings
- 2" Plantation Blinds Throughout
- Wire & Brace For Ceiling Fan With Double Switches in MBR and LVR
- Vinyl Foyer Entry
- 7/16" 5.5# Rebond Carpet Pad
- Shaw Delight Nylon Carpet with R2X Soil and Stain Resistance
- Barn Door on Kitchen Pantry and Master Bath
- Residential Door Stops
- Trey Ceiling With Beams - Living Room
- Wood Slat Niche W Table Ent Center

KITCHEN

- Spring Kitchen Faucet
- Duracraft Cabinets with 42" Overhead Cabinets
- Drawer Over Door Construction In Kitchen
- Designer Cabinet Hardware
- Heavy Duty Hidden Cabinet Hinges
- Sourwood Backplash Countertop to Cabinet
- Lined Overhead and Base Cabinets
- Stainless Steel Sink With Sprayer
- Plumb For Icemaker
- Granite Countertops
- Frigidaire Black Dream Kitchen - Side-by-Side Refer with Ice & Freezer
- Deluxe Electric Smooth Top Range
- Spacesaver Microwave
- Dishwasher

Due to our continuous improvement efforts, specifications are subject to change without notice.

Revised 4/16/20

The logo for Waco II features a stylized black roofline above the text "Waco II" in a bold, sans-serif font.